

• 18G Drawn Sinks • Single Cutout SCO sinks • 16 Gauge Drawn Sinks • 16G Handcrafted Farmhouse Sinks • Fireclay Farmhouse Kitchen Sinks • Vanity Bathroom Sinks • Quartz sinks

18 Gauge Drawn Sinks

- 18 gauge stainless steel • Sound-shielding pads and coating for a quieter kitchen environment.
- Fully compatible with standard kitchen sink plumbing • Limited lifetime warranty.



SIN-18-SINBWL-1210

Outside - 14 ¹⁵/₁₆"x12 ⁵/₈"
 Inside - 12 ¹⁵/₁₆"x10 ⁵/₈"
 Depth - 7"
 Minimum Cabinet - 18"
 1 Strainer included



SIN-18-SINBWL-1618

Outside - 18"x16"
 Inside - 16"x14"
 Depth - 8"
 Minimum Cabinet - 21"
 1 Strainer included
 Matching Grid Available



SIN-18-SINBWL-2318

Outside - 23 ³/₈"x17 ³/₄"
 Inside - 21 ³/₈"x15 ³/₄"
 Depth - 8"
 Minimum Cabinet - 27"
 1 Strainer included
 Matching Grid Available



SIN-18-SINBWL-2321

Outside - 23 ¹/₄"x21"
 Inside - 21 ³/₄"x19"
 Depth - 8"
 Minimum Cabinet - 27"
 1 Strainer included
 Matching Grid Available



SIN-18-SINBWL-3018

Outside - 29 ⁷/₈"x18 ¹/₁₆"
 Inside - 27 ⁷/₈"x15 ¹⁵/₁₆"
 Depth - 8"
 Minimum Cabinet - 36"
 1 Strainer included
 Matching Grid Available



SIN-18-DBLBWL-4060-3120S

Outside - 31 ¹/₂"x20 ¹/₂"
 Left Inside - 12 ³/₄"x16 ³/₈"
 Right Inside - 15 ¹/₂"x18 ¹/₂"
 Depth - 7 ¹/₂" / 9"
 Minimum Cabinet - 36"
 1 Strainer included
 Matching Grid Available



SIN-18-DBLBWL-6040-3120S

Outside - 31 ¹/₂"x20 ¹/₂"
 Left Inside - 15 ¹/₂"x18 ¹/₂"
 Right Inside - 12 ³/₄"x16 ³/₈"
 Depth - 9" / 7 ¹/₂"
 Minimum Cabinet - 36"
 1 Strainer included
 Matching Grid Available



SIN-18-DBLBWL-5050-3118

Outside - 32 ¹/₄"x18 ¹/₂"
 Left Inside - 14 ¹/₂"x16 ¹/₂"
 Right Inside - 14 ¹/₂"x16 ¹/₂"
 Depth - 8"
 Minimum Cabinet - 36"
 1 Strainer included
 Matching Grid Available



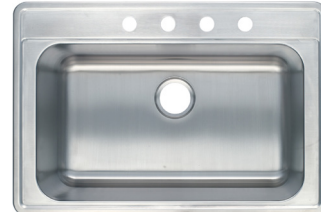
SIN-18-DBLBWL-4060-3120

Outside - 30 ³/₄"x19 ¹/₂"
 Left Inside - 11"x14 ¹/₂"
 Right Inside - 16 ¹/₂"x17 ¹/₂"
 Depth - 7 ¹/₂" / 9"
 Minimum Cabinet - 36"
 1 Strainer included
 Matching Grid Available



SIN-18-DBLBWL-6040-3120

Outside - 30 ³/₄"x19 ¹/₂"
 Left Inside - 16 ¹/₂"x17 ¹/₂"
 Right Inside - 11"x14 ¹/₂"
 Depth - 9" / 7 ¹/₂"
 Minimum Cabinet - 36"
 1 Strainer included
 Matching Grid Available



SIN-18-OSINBWL-3322

Outside - 33"x22"
 Inside - 27 ⁷/₈"x16"
 Depth - 9"
 Minimum Cabinet - 36"
 4 Faucet Holes



SIN-18-ODBLBWL-5050-3322

Outside - 33"x22"
 Left Inside - 14"x16"
 Right Inside - 14"x16"
 Depth - 8"
 Minimum Cabinet - 36"
 3 Faucet Holes



P-SIN-18-DBLBWL-5050-3218

Outside - 32 3/8"x18 1/8"
Left Inside - 14 5/8"x16"
Right Inside - 14 5/8"x16"
Depth - 9"
Minimum Cabinet - 36"
Strainer Not Included



P-SIN-18-DBLWBWL-6040-3221

Outside - 31 3/4"x20 5/8"
Left Inside - 15 3/4"x18 5/8"
Right Inside - 13"x16 1/2"
Depth - 9"/7"
Minimum Cabinet - 36"
Strainer Not Included



P-SIN-18-SINBWL-2318

Outside - 23"x18"
Inside - 21"x15 3/4"
Depth - 9"
Minimum Cabinet - 27"
Strainer Not Included
*Also available in 20 Gauge



P-SIN-18-SINBWL-3018

Outside - 30"x18"
Inside - 28"x16"
Depth - 9"
Minimum Cabinet - 36"
Strainer Not Included

Single Cutout SCO sinks



SINSCO-18-DBLBWL-5050-3218

Overall: 32 1/8"x18"
Left Bowl: 14 1/2"x16"x9"
Right Bowl: 14 1/2"x16"x9"
Minimum Cabinet: 36"



SINSCO-18-DBLBWL-6040-3218

Overall: 32 1/8"x18"
Left Bowl: 16"x16"x9"
Right Bowl: 13"x16"x7"
Minimum Cabinet: 36"

*Can Be Flipped To Use As A 40/60 Sink Too



SINSCO-18-SINBWL-3218

Overall: 32 1/8"x18"
Bowl: 30 1/8"x16"x9"
Minimum Cabinet: 36"

16 Gauge Drawn Sinks



SIN-16-SINBWL-1815

Outside - 18"x15"
Inside - 16"x13"
Depth - 7"
Minimum Cabinet - 21"
Matching Grid Available



SIN-16-SINBWL-2318

Outside - 23 1/2"x17 3/4"
Inside - 21 1/2"x15 3/4"
Depth - 9"
Minimum Cabinet - 27"
Matching Grid Available



SIN-16-SINBWL-3118

Outside - 31 1/2"x18 1/4"
Inside - 29 1/2"x16 3/8"
Depth - 9"
Minimum Cabinet - 36"
Matching Grid Available



SIN-16-DBLBWL-5050-3218

Outside - 32 1/4"x18 1/2"
Left Inside - 14 1/2"x16 1/2"
Right Inside - 14 1/2"x16 1/2"
Depth - 9"
Minimum Cabinet - 36"
Matching Grid Available



SIN-16-DBLBWL-6040-3120

Outside - 31 1/2"x20 1/2"
Left Inside - 17 3/4"x18 1/2"
Right Inside - 10 1/2"x16"
Depth - 9"/7"
Minimum Cabinet - 36"
Matching Grid Available



SIN-16-DBLBWL-4060-3120R

Outside - 31 1/2"x20 1/2"
Left Inside - 10 1/2"x16"
Right Inside - 17 3/4"x18 1/2"
Depth - 7"/9"
Minimum Cabinet - 36"
Matching Grid Available

16 Gauge Handcrafted Farmhouse Sinks

- Individually hand-crafted by skilled artisans.
- 16-gauge stainless steel for maximum durability (lower gauge indicates thicker steel).
- Luxurious, finely-tuned brushed steel finish.
- Sharp inside corners accentuate the contemporary look.
- Super premium sound-shielding pads and coating for maximum thermal and noise insulation.
- Extra-deep basin fits your largest cookware and utensils with ease.
- Fully compatible with standard kitchen sink plumbing.
- Limited lifetime warranty.



SIN-16-SINBWL-WEL-2318

Outside - 23"x18" • Inside - 21"x16"
Depth - 10" • Minimum Cabinet - 27"
Matching Grid Available



SIN-16-SINBWL-WEL-3219

Outside - 32"x19" • Inside - 30"x17"
Depth - 10" • Minimum Cabinet - 36"
1 Strainer and Grid included
*Also available in 18 Gauge



SIN-16-DBLBWL-WEL-5050-3219

Outside - 32"x19" • Inside - 14 1/2"x17"
Depth - 10" • Minimum Cabinet - 36"
Matching Grid Available
*Also available in 18 Gauge



SIN-16-SINBWL-WEL-3321FSAF

Outside - 32 7/8"x20 3/4" • Inside - 30 7/8"x18 3/4"
Depth - 10" • Minimum Cabinet - 36"
Matching Grid Available



SIN-SINKSTRAINER



SIN-16-DBWL-WEL-5050-3321FSAF

Outside - 32 7/8"x20 3/4" • Inside - 14.38"x16"
Depth - 10" • Minimum Cabinet - 36"



Fireclay Farmhouse Kitchen Sinks



SIN-POR-USBWH-3020FSAF
 Outside - 30X19 ³/₄"
 Inside - 29 ¹/₄" X18 ³/₄"
 Depth - 8 ¹/₂"



SIN-POR-UDBWH5050-3220FSAF
 Outside - 31 ⁷/₈" X19 ³/₄"
 Inside - 14 ⁷/₈" X18 ³/₄"
 Depth - 8 ¹/₂"

Vanity Bathroom Sinks



SIN-POR-UNDOVLWHT-1714
 Outside - 19 ¹/₂" X16"
 Inside - 17 ¹/₂" X14 ³/₈"
 Depth - 8 ¹/₈"



SIN-POR-UNDOVLWHT-1512
 Outside - 17" X14 ¹/₈"
 Inside - 15" X12"
 Depth - 7 ³/₄"



SIN-POR-VOMRECWHT-2417
 Outside - 24" X17"
 Inside - 21" X11"
 Depth - 7 ¹/₂"



SIN-POR-UNDRECWHT-2015
 Outside - 20 ³/₈" X15 ¹/₈"
 Inside - 18 ¹/₈" X13"
 Depth - 7 ⁵/₈"



SIN-POR-UNDRECWHT-1813
 Outside - 18 ¹/₂" X13 ³/₄"
 Inside - 16 ¹/₂" X11 ³/₄"
 Depth - 8"



SIN-POR-VURWH-2015FL
 Outside - 19 ³/₄" X15 ³/₄"
 Inside - 17 ¹/₄" X13 ¹/₄"
 Depth - 7 ¹/₈"



SIN-POR-VOMOVLWHT-2118
 Outside - 20 ¹/₂" X17 ¹¹/₁₆"
 Inside - 16" X11 ³/₁₆"
 Depth - 7 ⁷/₈"



SIN-POR-VOMRECWHT-2118
 Outside - 21 ¹/₄" X17 ¹/₈"
 Inside - 16 ³/₈" X11 ³/₈"
 Depth - 7 ³/₈"

Highly Durable - best-in-class resistance to impact and scratch, and designed to be heat resistant up to 535F

Lasting Beauty - velvety smooth finish is resistant to stains and smudges, and UV protected surface protects against fading

Family Friendly - non-porous surface does not harbor bacteria, and the thick construction provides superior sound absorption when using the sink

Matte Black



SIN-QTZ-DBLBWL-5050-3219-BLK

Outside - 32 1/2"x19 1/2"
Left Inside - 14 1/2"x15 3/4"
Right Side - 14 1/2"x15 3/4"
Depth - 9"/9"
Minimum Cabinet - 36"



SIN-QTZ-DBLBWL-6040-3219-BLK

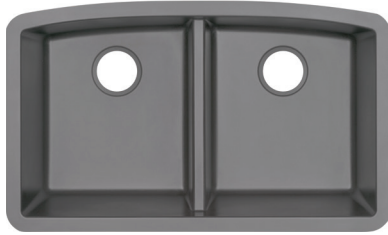
Outside - 32 1/2"x19 1/2"
Left Inside - 17 1/2"x15 3/4"
Right Side - 11 3/8"x15 3/4"
Depth - 9"/9"
Minimum Cabinet - 36"



SIN-QTZ-SINBWL-3219-BLK

Outside - 32 1/2"x19 1/2"
Inside - 30"x15 3/4"
Depth - 9"/9"
Minimum Cabinet - 36"

Matte Gray



SIN-QTZ-DBLBWL-5050-3219-GRY

Outside - 32 1/2"x19 1/2"
Left Inside - 14 1/2"x15 3/4"
Right Side - 14 1/2"x15 3/4"
Depth - 9"/9"
Minimum Cabinet - 36"



SIN-QTZ-DBLBWL-6040-3219-GRY

Outside - 32 1/2"x19 1/2"
Left Inside - 17 1/2"x15 3/4"
Right Side - 11 3/8"x15 3/4"
Depth - 9"/9"
Minimum Cabinet - 36"



SIN-QTZ-SINBWL-3219-GRY

Outside - 32 1/2"x19 1/2"
Inside - 30"x15 3/4"
Depth - 9"/9"
Minimum Cabinet - 36"

Matte White



SIN-QTZ-DBLBWL-5050-3219-WHT

Outside - 32 1/2"x19 1/2"
Left Inside - 14 1/2"x15 3/4"
Right Side - 14 1/2"x15 3/4"
Depth - 9"/9"
Minimum Cabinet - 36"



SIN-QTZ-SINBWL-3219-WHT

Outside - 32 1/2"x19 1/2"
Inside - 30"x15 3/4"
Depth - 9"/9"
Minimum Cabinet - 36"

Matte Black



SIN-QZ-STRSINBWL-3119-BLK

Outside - 31 3/4" x 19 3/4"
8 Bowl Size - 29" x 16 3/8" x 9"
Minimum Cabinet - 36"



SIN-QZ-STRDBLBWL-5050-3319-BLK

Outside - 32 1/2" x 19 1/2"
Left side - 14 1/4" x 16 3/4" x 9"
Right Side - 14 1/4" x 16 3/4" x 9"
Minimum Cabinet - 36"



SIN-QZ-STRSINBWL-2418-BLK

Outside - 24 1/4" x 18 1/4"
Bowl Size - 21 3/4" x 15 3/4" x 8.5"
Minimum Cabinet - 27"



SIN-QZ-STRDBLBWL-6040-3221-BLK

Outside - 32" x 21 1/4"
Left side - 17 1/8" x 19" x 9"
Right Side - 11 1/2" x 16 3/4" x 9"
Minimum Cabinet - 36"

Matte Gray



SIN-QZ-STRSINBWL-3119-GRY

Outside - 31 3/4" x 19 3/4"
Bowl Size - 29" x 16 3/8" x 9"
Minimum Cabinet - 36"



SIN-QZ-STRDBLBWL-5050-3319-GRY

Outside - 32 1/2" x 19 1/2"
Left side - 14 1/4" x 16 3/4" x 9"
Right Side - 14 1/4" x 16 3/4" x 9"
Minimum Cabinet - 36"



SIN-QZ-STRSINBWL-2418-GRY

Outside - 24 1/4" x 18 1/4"
Bowl Size - 21 3/4" x 15 3/4" x 8.5"
Minimum Cabinet - 27"



SIN-QZ-STRDBLBWL-6040-3221-GRY

Outside - 32" x 21 1/4"
Left side - 17 1/8" x 19" x 9"
Right Side - 11 1/2" x 16 3/4" x 9"
Minimum Cabinet - 36"

Matte White



SIN-QZ-STRSINBWL-3119-WHT

Outside - 31 3/4" x 19 3/4"
Bowl Size - 29" x 16 3/8" x 9"
Minimum Cabinet - 36"



SIN-QZ-STRDBLBWL-5050-3319-WHT

Outside - 32 1/2" x 19 1/2"
Left side - 14 1/4" x 16 3/4" x 9"
Right Side - 14 1/4" x 16 3/4" x 9"
Minimum Cabinet - 36"



SIN-QZ-STRSINBWL-2418-WHT

Outside - 24 1/4" x 18 1/4"
Bowl Size - 21 3/4" x 15 3/4" x 8.5"
Minimum Cabinet - 27"

MSI

Making Dream Surfaces Attainable

www.msisurfaces.com